

特斯拉 model Y 智能门安装说明

Tesla model Y smart door installation instructions

产品总成 product assembly



协议线 Protocol line



电源线 Power wire



自动开门雷达 Automatic Opening Radar



后方来车预警雷达 Early-warning radar for incoming car from behind



四门按键线材 4 doors switch wires



控制盒支架 Control box holder



总线 Main cable



控制盒 Control box



地线 Ground wire



防撞雷达 Anti-collision radar



开孔磨具 Punch module



电吸锁 Suction lock



四门按键 4 door switch



把手按键 Handle button



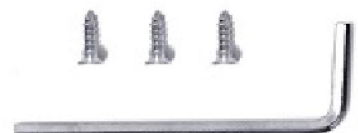
执行器 Actuator



转接线 Adapter cable



钻头 Drill



六角扳手, 螺丝 Hexagon wrench Screw

产品功能 Product Features



手机靠近自动开门 Automatic open when the phone closing



手机 APP 远程开关门 Remote open/close the door by App



外拉把手开关门 Open/close the door by pull the outside handle



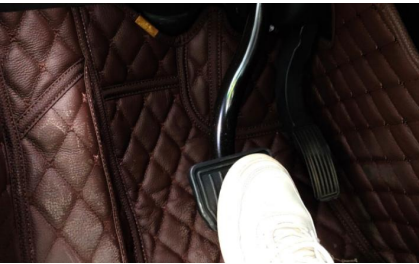
内拉把手开关门 Open/close the door by Interior handle



按键开关门 Open/close the door by the switch



手自一体关门 Manual/Automatic door closing



脚刹关门 Close the door by the brake



开门防撞预警 Door open anti-collision warning

安装步骤 installation steps

一. 拆前门板说明 The instruction for removing the front door panel



1. 卸下上图三处螺丝 Remove the screws shown in the figure above



2. 用撬刀撬右下角卸下门饰板 Pry the lower right corner to remove the door trim panel



3. 拿出标示处胶条和胶塞把玻璃螺丝对上孔位 Take out the adhesive strip and the stopper at the marked area. Align the glass screw to with the hole.



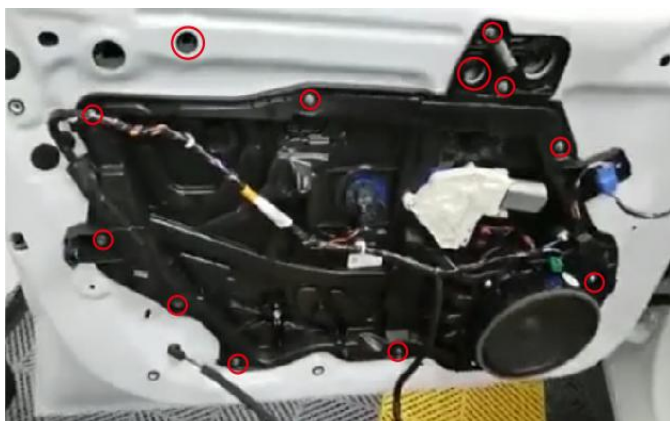
4. 把与盖板相连的插线拔下拿下盖板 Unplug the wire and take out the trim panel.



5. 玻璃槽卡扣需要同时用螺丝刀拨开取出玻璃 the slot buckle of the glass need to be opened and removed at the same time.



6. 拔掉与饰板相连的插头 unplug the wire on the trim panel.



7. 取下标记的所有螺丝拿下饰板 Remove all the marked screws and take out the trim panel



8. 取出上图三颗螺丝，拆下原车把手 Remove these three screws and take off the original handle.

二、电吸锁、把手、铰链安装说明



1. 替换原车锁头，用我司螺丝固定 Replace the original lock, fixed with our screws.



2. 插头与原车锁头拔出的母座对插 Connect our plug to the socket which unplug from the original lock.



3. 与电吸锁头直接对插 Connect to the electric lock



4. 下压旋转取出原车按钮替换我司按钮 Press and rotate to remove the original button, and install our button



5. 把应急拉绳穿出门板 Thread the emergency pull rope through the door board.

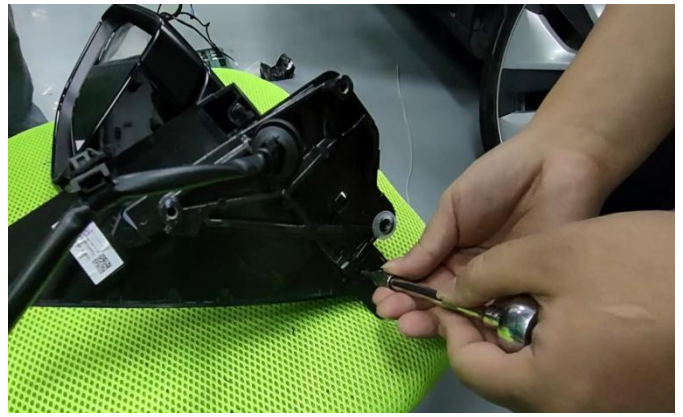


6. 拆下原车限位器安装智能门执行器 Remove the original stopper , and then install our intelligent actuator.

三、侧开门预警防撞雷达安装



1. 卸下三颗螺丝拿出后视镜 Unscrew these three screws, and take out the rearview mirror



2. 卸下螺丝 take off the screws



3. 拿下胶条 remove the seal



4. 用撬刀沿着缝隙撬开 pry open along the gap



5. 拿出后视镜盖板 take out the rearview mirror



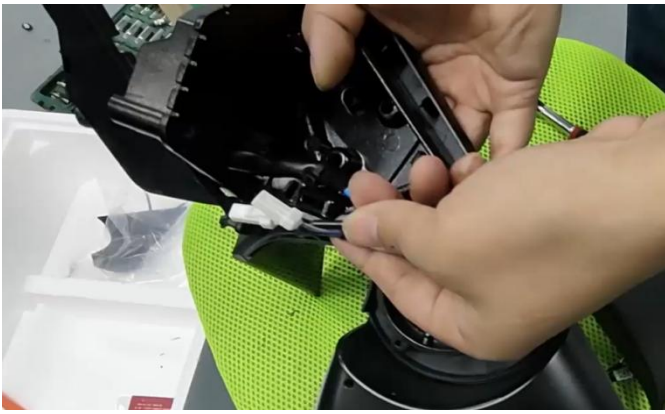
6. 用我司模块照模打三小一大四个孔 Punch four holes using our module to mold. (Three small holes, one large hole)



7. 把雷达线穿过大孔 Thread the radar wire through the big hole.



8. 三个小孔用我司螺丝固定雷达 fix the radar with our screws.



9. 把雷达线随原车线材穿过孔位（要穿进防水塞里）
Thread the radar wire and the original wire through the hole (need to thread into the waterproof rubber.)



10. 把拆下来的盖板扣回去，然后恢复胶条打紧螺丝
Recover it, and fixed.



11. 用扎带扎住防水胶塞 Tight the waterproof with the ribbon

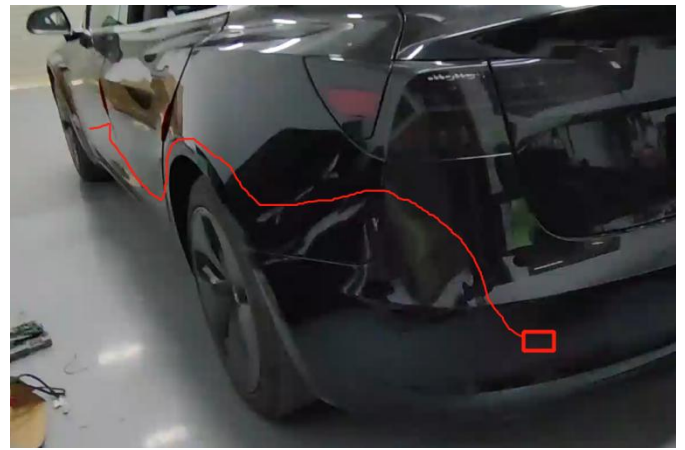


12. 装回原车打紧螺丝 install it and fixed.

四、后方来车预警防撞雷达安装



1. 安装后方来车雷达
Install the rear radar.



2. 把后方来车雷达从门板上走线到车尾通风口
Wiring and position of the rear radar.



3. 雷达线材从车门穿过波纹管到尾箱通风口到上图走线，再穿到雷达安装对应的位置 The radar wire pass through the corrugated pipe from the door to the tailgate vent.and go into the install position.



4. 拆下车尾盖板 Take off the tailgate cover



5. 不要把 3M 胶贴到下方了，不然会导致雷达不灵敏
Don't paste the 3m sticker under the radar, or it will not sensitive.



6. 根据智能门安装位置安装对应的左右车尾雷达
install the radar to the position as the figure shown.

五、自动开门雷达安装



1. 把自动开门雷达贴在侧后方玻璃上(贴的靠下一点)

Paste the automatic opening radar to the side rear glass.



2. 自动开门雷达如上图走线到门板上

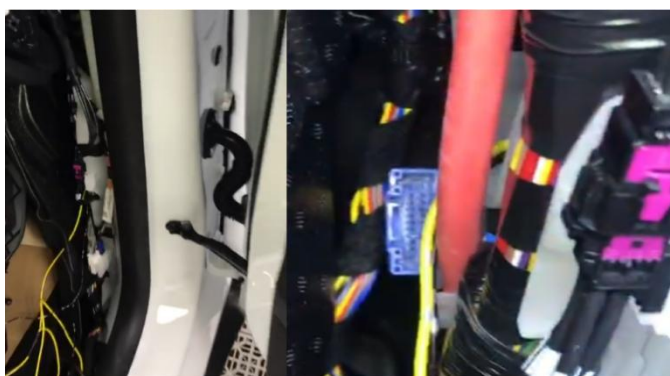
The wiring of the automatic opening radar.

六、开关按键安装



1. 智能门按键如上图走线至门板与控制盒对插 the wiring of the smart door switch.

七. 协议转插, 取电



1. 拆下副驾 A 柱右下方饰板找到蓝色插头用 can 线对插 Take off the trim panel at the lower right side of the copilot A pillar.

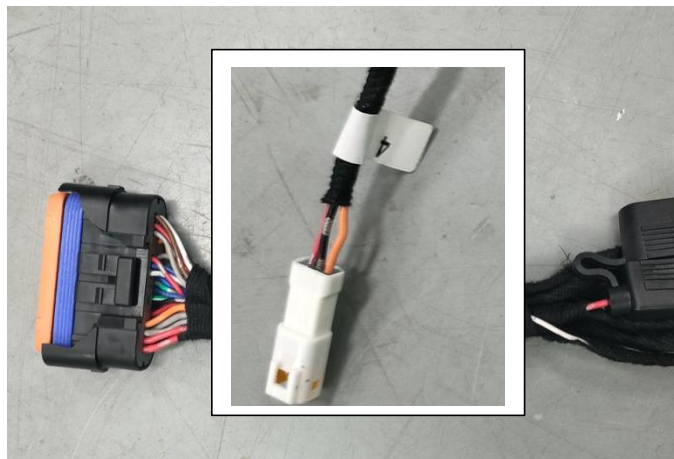


2. 在前盖接电柱取电然后找孔走线副驾 Connect the power at the front cover battery, and pass through the wire to the copilot.

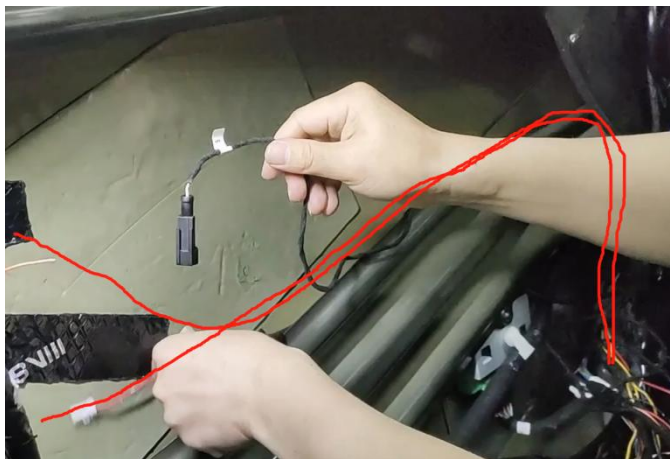
八. 总线插头对插



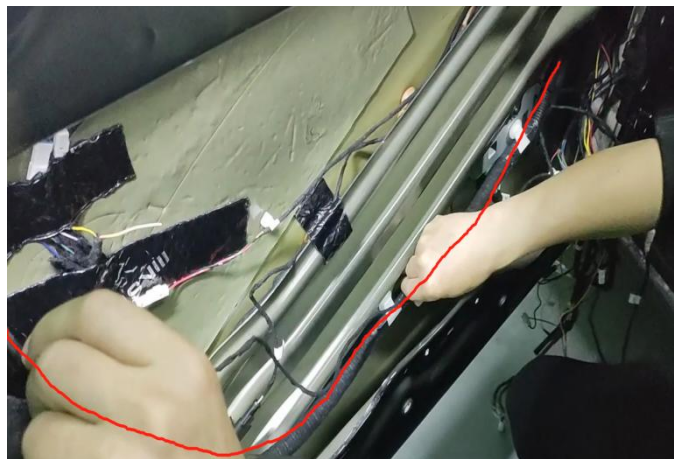
1. 把控制盒固定在支架上然后用螺丝固定在门板上
fixed the control box to the door panel.



2. 把雷达、按键、电源、执行器、协议插头与上图总线按线材上的标签序号对插
Connect all the plug according to the number indicated by the sticker on the wire.



3. 九号线，十号线如上图走线到锁头，把手对插
Thread the No.9 wire, No.10 wire to the lock and the handle as the wiring shown above.



4. 八号线顺着原车上图线出来与门板对插 No. 8 wire connect to the door panel as the figure shown



5. 八号线转插在门板上
No.8 connect to the door panel.

安装完成后测试功能
若功能一切正常
理顺好线材恢复饰板

Test the function after installation
If everything in good condition
Tidy up and fixed the wires and recover the trim panel