

Install and install the product Please read this installation manual carefully

Please keep this manual properly

### Installation Precautions

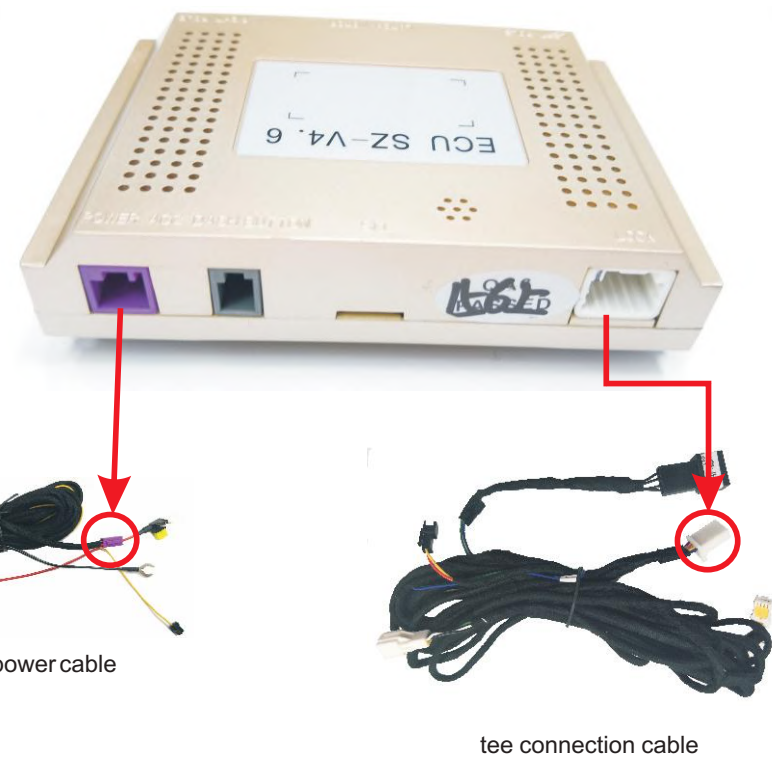
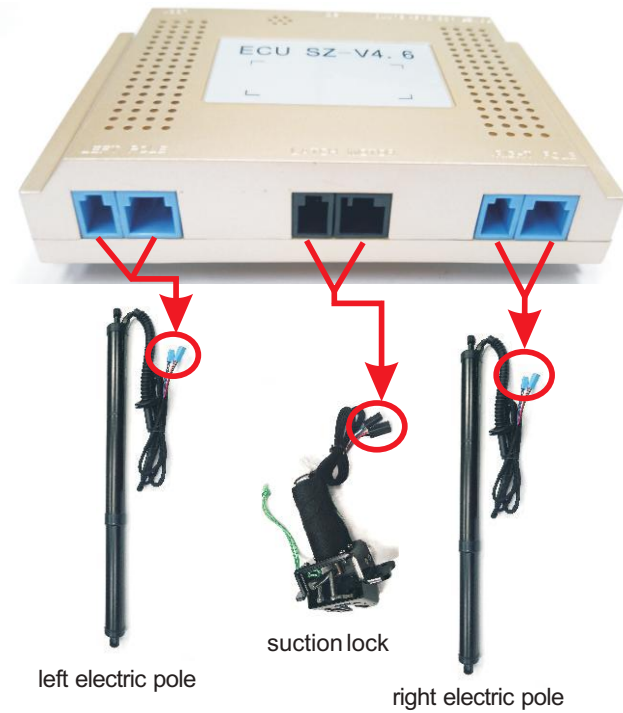
- Before installing the tailgate, check the status of the original tailgate (the door gap is stable)
- Check the appearance of the vehicle before installation to take pictures of the scratches and inform the owner
- After the product is installed, it is necessary to perform tailgate learning to work properly.
- All the pictures in this manual are for reference only. Pictures and objects may differ, but the installation method is the same.
- In order to facilitate your installation, please read the instruction manual of the product carefully before installation; care should be taken to protect the surface of your car and prevent scratches during installation.
- Please check regularly that all accessories connected with the car are loose to ensure safe use.

### Height setting

Raise the tailgate to the ideal height, press the tailgate to install the switch button, 3-5 seconds will appear "beep" a long ring, the handle will release, then press the tailgate button to close, the tailgate will close in place.



### cable instruction

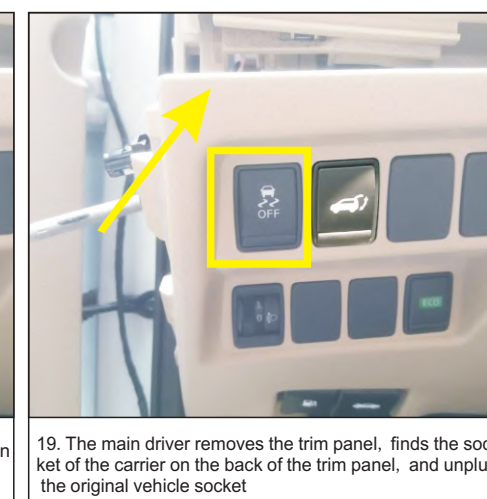
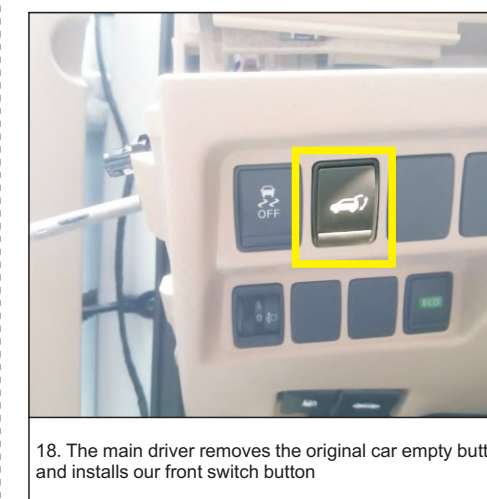
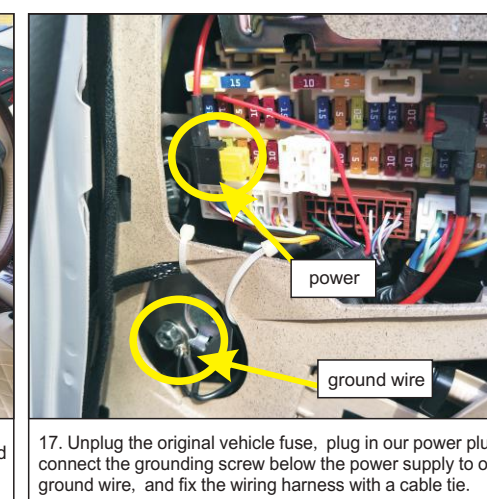
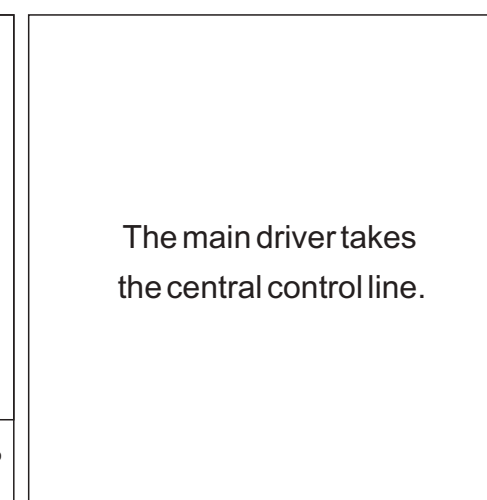
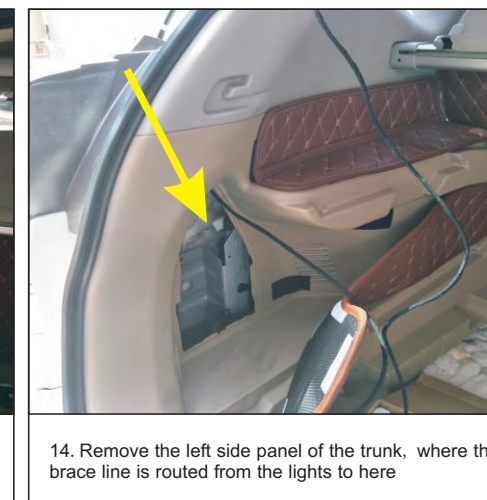
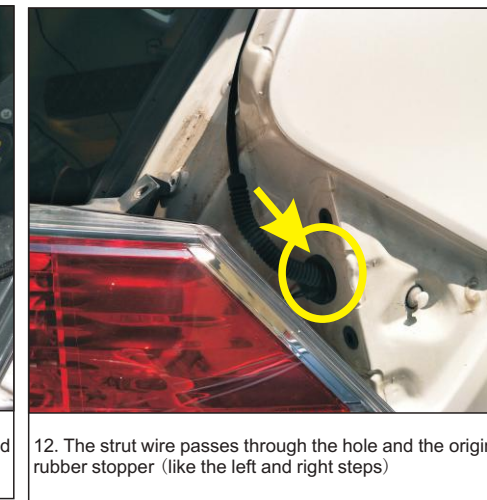
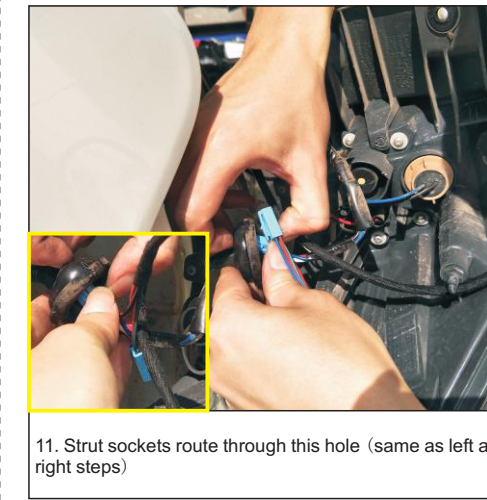
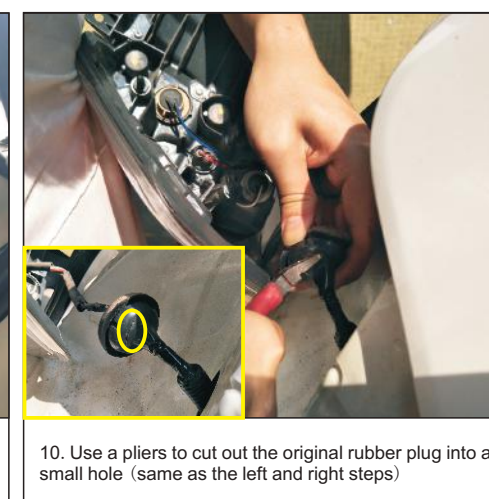
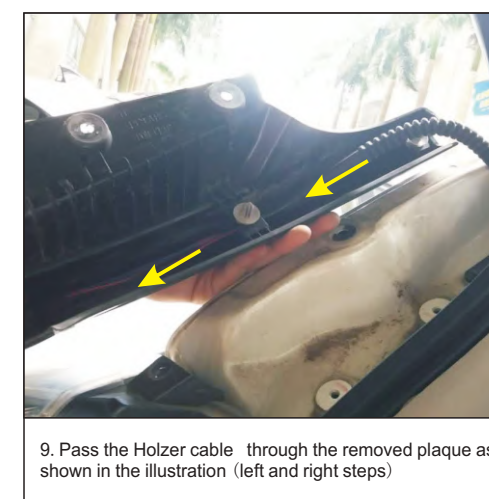
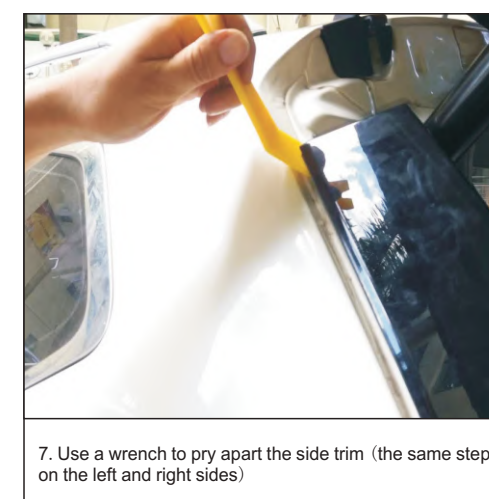
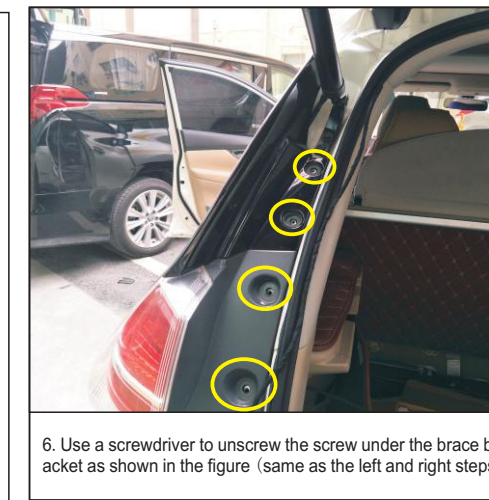
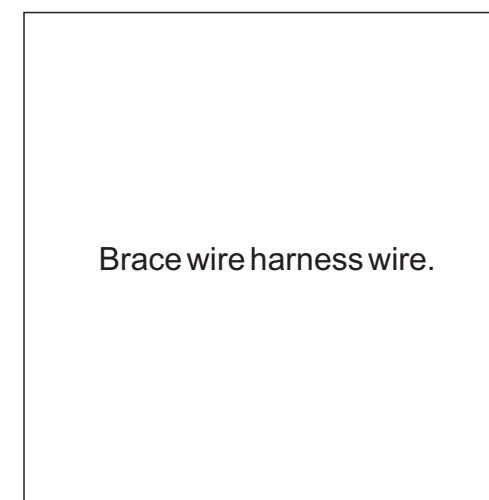
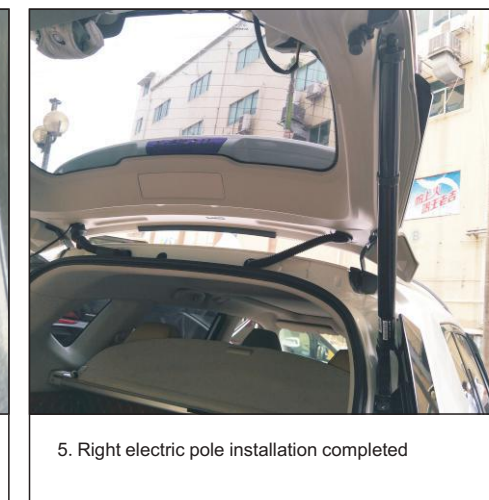
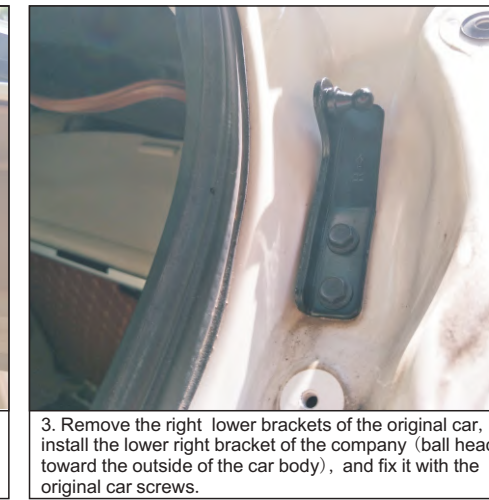
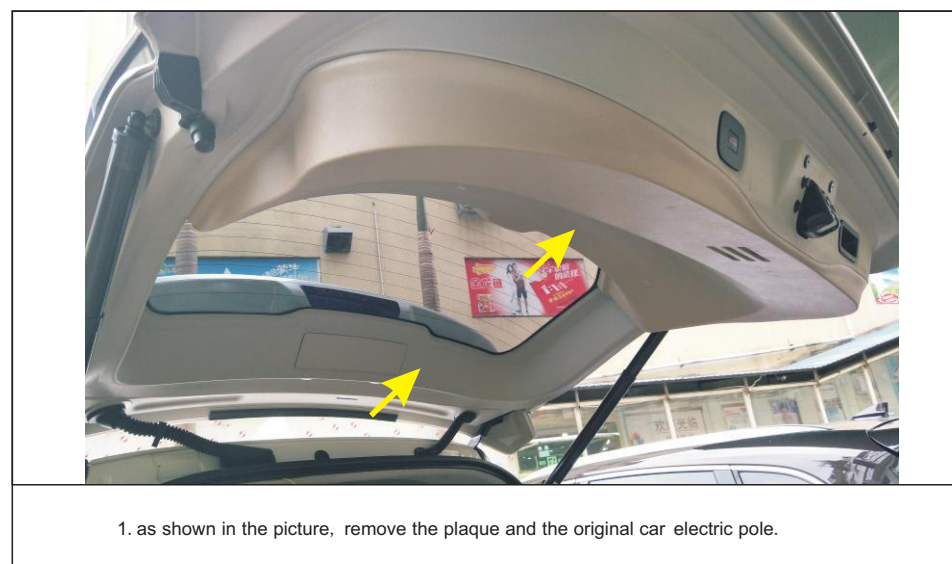


### components list

| 编号 | 配件名称                 | 数量 | 图片 |
|----|----------------------|----|----|
| ①  | left electric pole   | 1  |    |
| ②  | right electric pole  | 1  |    |
| ③  | left lower bracket   | 1  |    |
| ④  | right lower bracket  | 1  |    |
| ⑤  | Lower support gasket | 1  |    |
| ⑥  | Ball head gasket     | 1  |    |
| ⑦  | power cable          | 1  |    |
| ⑧  | front switch cable   | 1  |    |
| ⑨  | suction lock         | 1  |    |
| ⑩  | tee connection cable | 1  |    |
| ⑪  | tail door button     | 1  |    |
| ⑫  | control box          | 1  |    |

### installation steps

install brackets and electric poles





| Fault phenomenon                                    | Troubleshooting method  |
|---|---|
| The original car remote control did not work        | Yellow control line is connected  |
| Not working after installation is complete          | 1. Check whether the positive power supply is connected with 12V-16V<br>2. Check if the power line fuse is inserted<br>3. Check whether the ground is connected   |
| Guan Wei Men Pass not in place                      | 1. Whether the left and right brackets of the struts are installed in reverse<br>2. Whether the control box sockets are inserted well<br>3. Whether the bracket is replaced with our special screws<br>4. There are two vinyl glues on the left and right sides of the original tailgate cover. |
| The original car remote controller cannot be closed | Whether there is learning after loading, the first time you need to install a car, you need to press the rear door. Press key to learn once   |
| The tailgate can't go halfway up                    | 1. Whether the left and right brackets of the struts are installed in reverse<br>2. Whether the control box sockets are inserted well<br>3. Whether the bracket is replaced with our special screws Disclaimer  |

### Disclaimer

The related problems and losses caused by improper installation and use are not covered by our company's warranty. Please read this manual carefully before use. Please read it carefully after you read it for future reference. The picture is for reference only and the product shall prevail in kind.

### Instructions for use



Press the front switch button to open/close the tailgate

Press the remote control unlock button for 3 seconds to open/close the tailgate



Press the tailgate button to close the door

Original car open door button

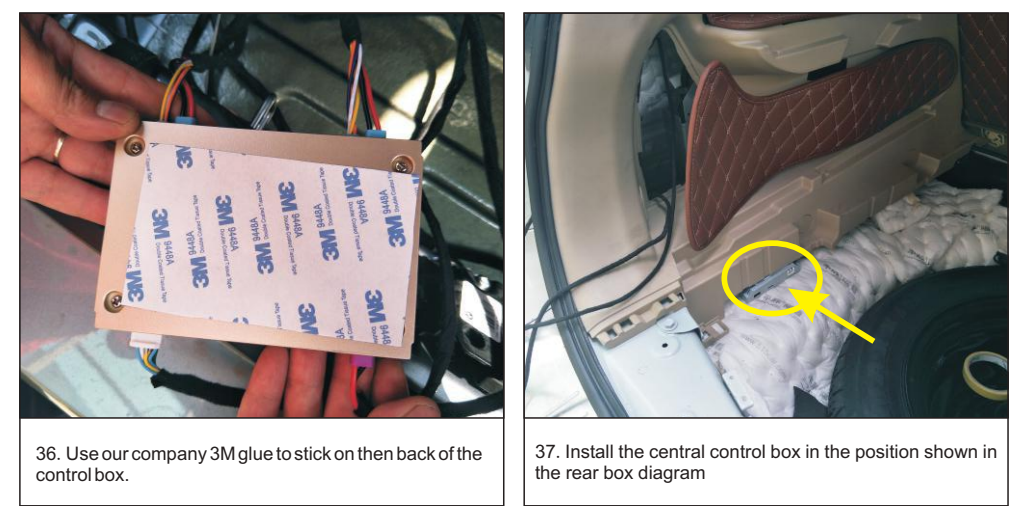


Anti-pinch function: 1. Anti-clamping: When the obstacle is under the tailgate closed, when the tailgate is closed, when you encounter an obstacle, you will bounce back in the opposite direction 2. Door collision avoidance: When the obstacle is behind the tailgate Obstacles will bounce back in the opposite direction

**!** Note: When the door is closed, the sides of the strut part must be heavy, so do not try the side clamp. Damage is not responsible

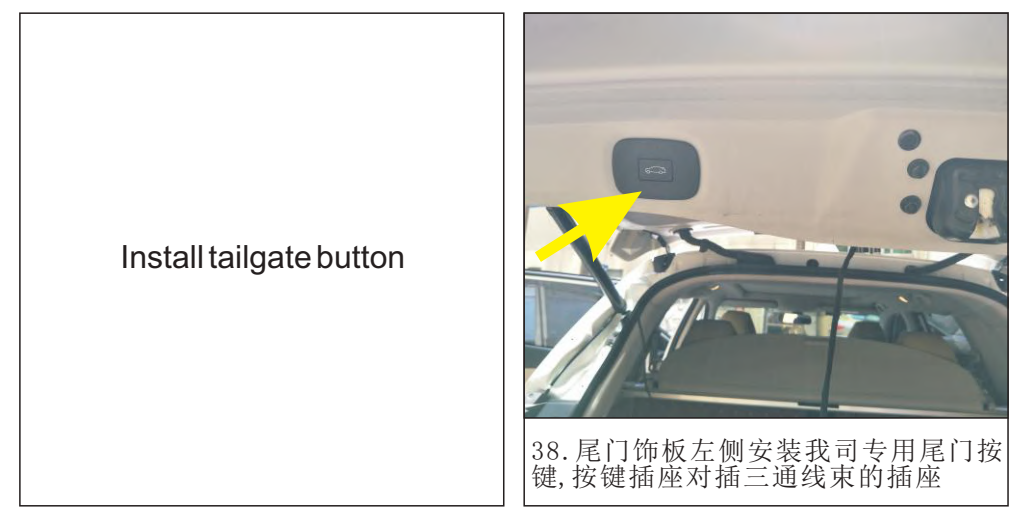


**Tail door height setting**  
Raise the tailgate to the ideal height, press the tailgate to install the switch button, 3-5 seconds will appear "beep" sound, release the handle, press the tailgate again, The key is off, the tailgate is closed, and then there are two "squeaks", that is, the tailgate is completed.



36. Use our company 3M glue to stick on then back of the control box.

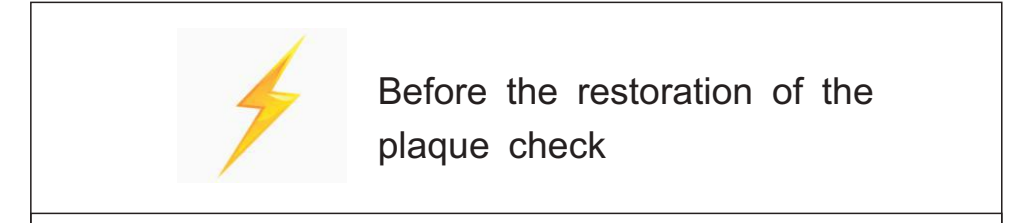
37. Install the central control box in the position shown in the rear box diagram



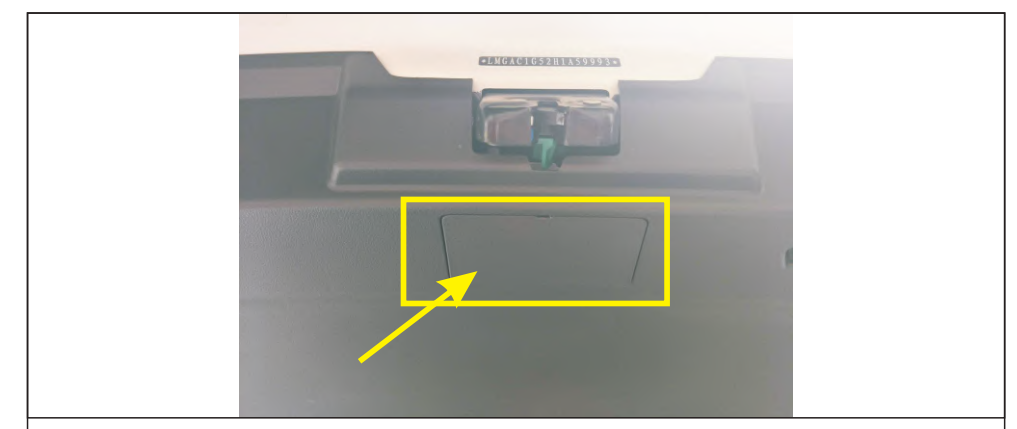
Install tailgate button

38. 尾门饰板左侧安装我司专用尾门按键, 按键插座对插三通线束的插座

33. Learn the back door and restore the plaque (see below for learning methods) ▼  
After the installation is complete, you must set the tailgate learning. Please make sure the door can be turned on and off. Height, press the rear door to install the switch button, 3-5 seconds to hear a long bang, release the handle, click again  
The tailgate button closes the door, the tailgate closes in place, and then you hear two clicks, that is, the tailgate is completed, if not  
If you hear "squeaking" two times, your study will be unsuccessful and you will need to learn again. If you do not close the door, use your hand to assist in learning. Push the door tightly



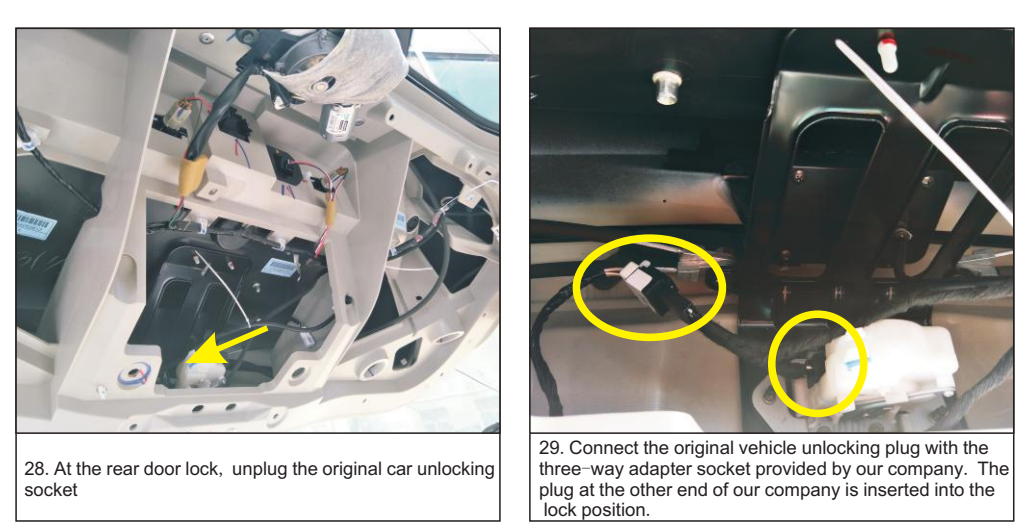
33. After installation, please check:  
1. Is the screw replaced with a special screw? 2. Is the screw snaking or playing?  
3. socket is inserted in place 4. Does the suction lock work?  
5. Whether the harness is damaged or pinched during the wiring process  
6. Whether the remote controller or the main driving switch button can open or close the tailgate



**!** When the tailgate cannot be opened normally, find the original car emergency safety lock in the trunk and open the emergency cover. Pull emergency switch to open

### Frequently asked questions

1. the bracket is installed in reverse: the door is not closed
2. The bracket screws are not replaced as required: the door is not closed properly and the rod is damaged
3. control box connector is not inserted in place, loose: open or close the door without force or force
4. The club head and retainer are not installed: The lever is released during use (check after installation)
5. the connector is not inserted in place, off: functional failure
6. electric suction lock off center: the door is not closed, the door gap is large, tight pull leads to open the door loud
7. the new car is not installed for a long time to start the car caused by electricity: switch door is not normal, need to re-fire
8. More than 5 kg of noise insulation cotton on the tailgate may affect the door opening and closing force
9. need to learn after the first installation or power off: long press to install the back door closing button 3-5 seconds to hear a long sound, then release the handle and then press the door down to hear the "click" 2 sound, learning success (No study will appear abnormal opening and closing doors)
10. When the ball head is not correct, the non-linear ball head can rotate 360°



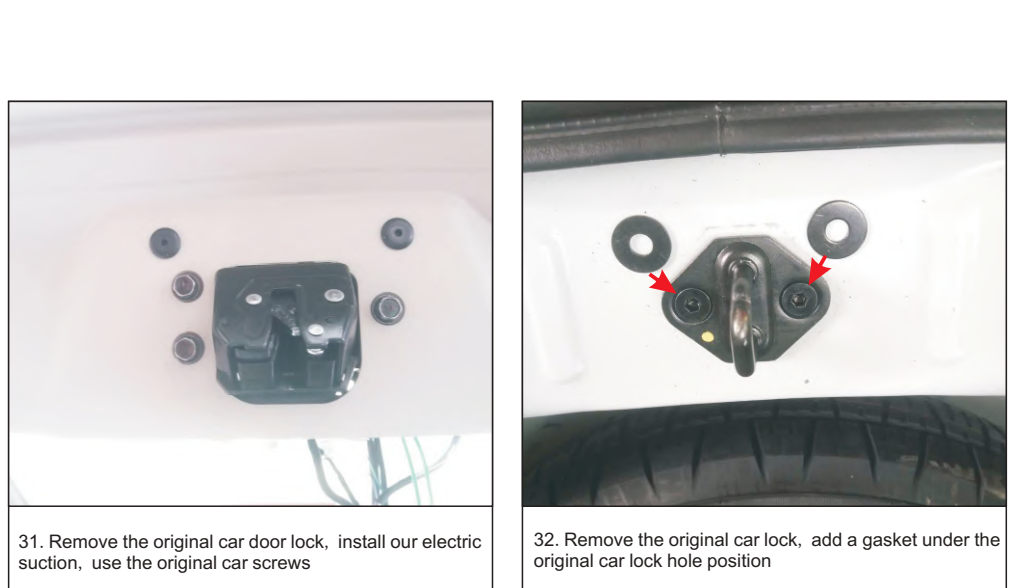
28. At the rear door lock, unplug the original car unlocking socket

29. Connect the original vehicle unlocking plug with the three-way adapter socket provided by our company. The plug at the other end of our company is inserted into the lock position.



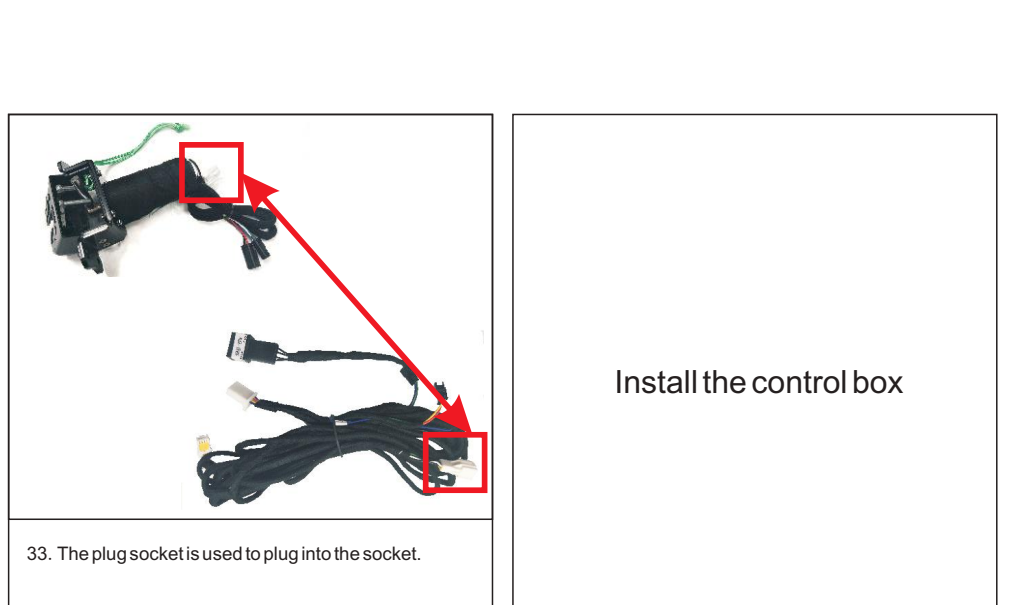
30. The tee connection cable along the yellow line arrow through the original car waterproof rubber plugs to the control box

Install suction lock



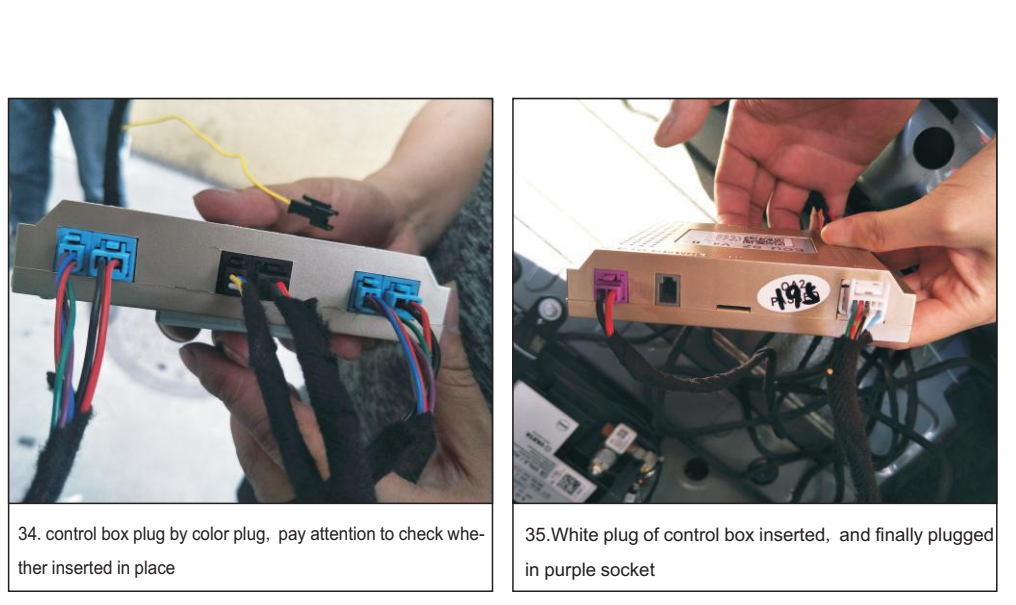
31. Remove the original car door lock, install our electric suction, use the original car screws

32. Remove the original car lock, add a gasket under the original car lock hole position



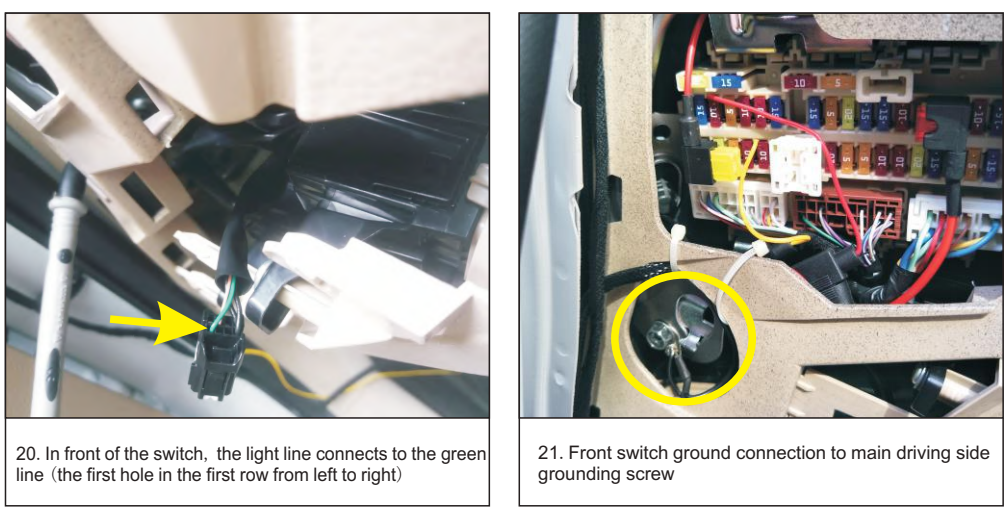
33. The plug socket is used to plug into the socket.

Install the control box



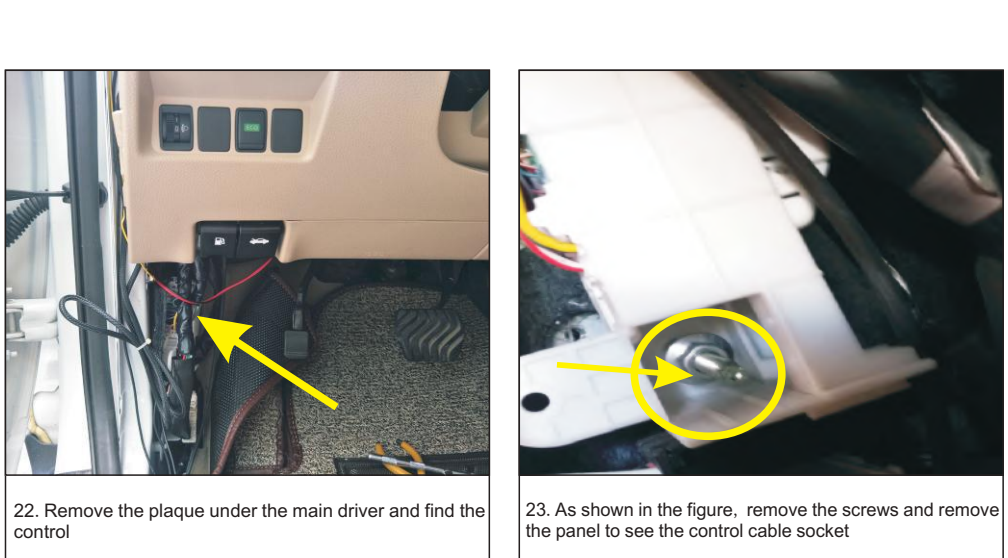
34. control box plug by color plug, pay attention to check whether inserted in place

35. White plug of control box inserted, and finally plugged in purple socket



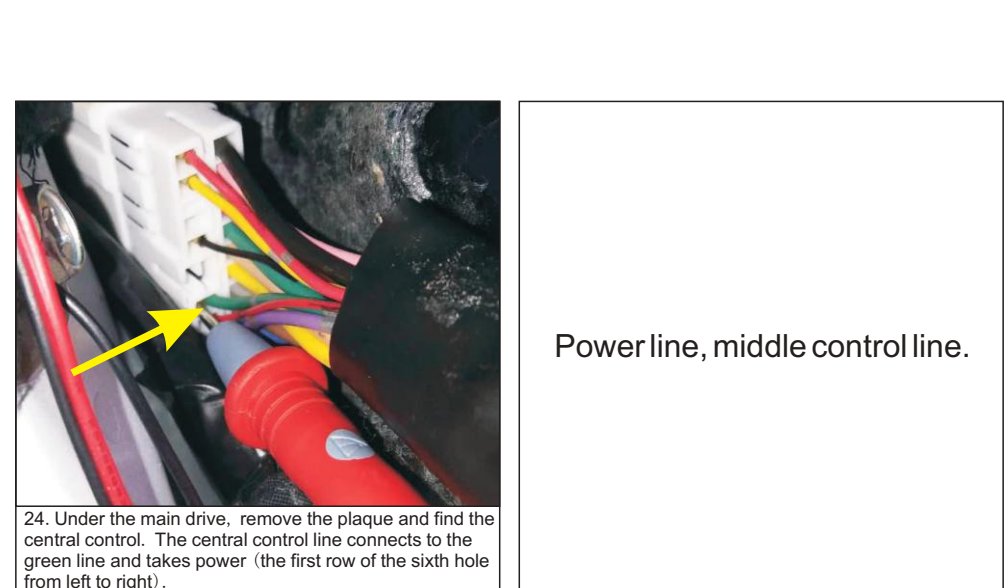
20. In front of the switch, the light line connects to the green line (the first hole in the first row from left to right)

21. Front switch ground connection to main driving side grounding screw

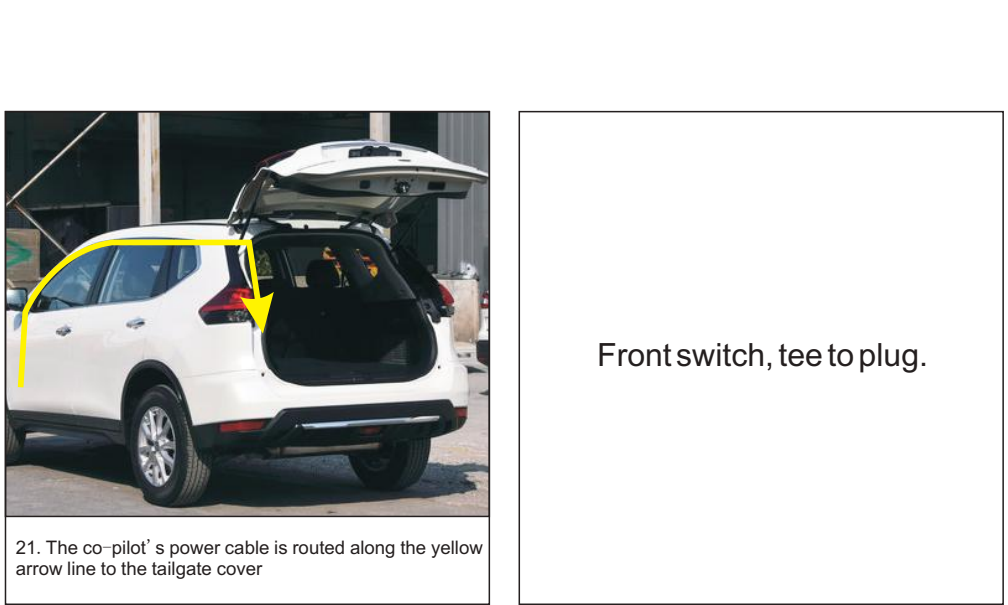


22. Remove the plaque under the main driver and find the control

23. As shown in the figure, remove the screws and remove the panel to see the control cable socket

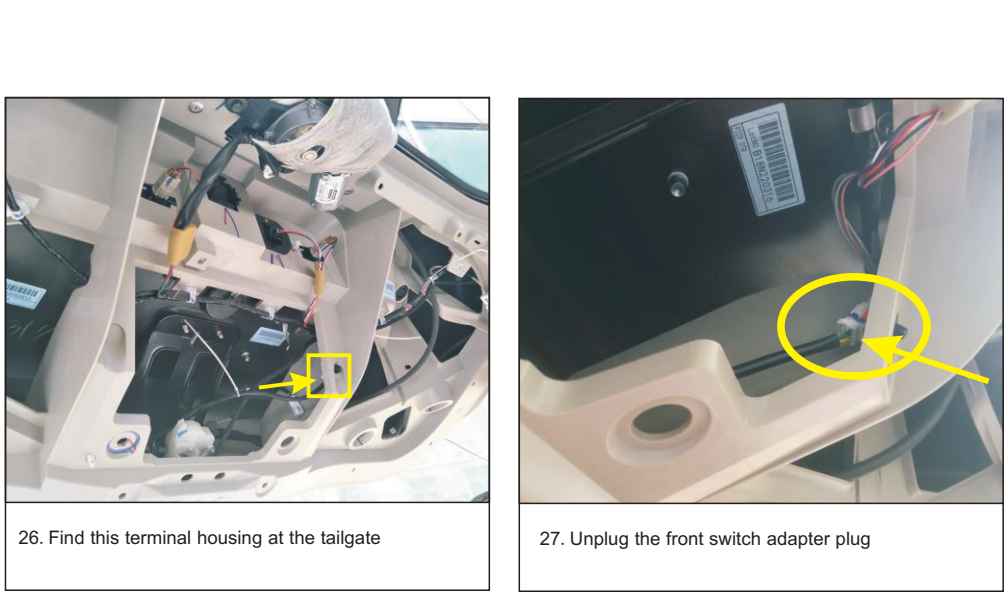


Power line, middle control line.



21. The co-pilot's power cable is routed along the yellow arrow line to the tailgate cover

Front switch, tee to plug.



26. Find this terminal housing at the tailgate

27. Unplug the front switch adapter plug