

On the Toyota RAV4 electric suction V4.6 installation instructions

Install and install the product Please read this installation manual carefully
Please keep this manual properly

Installation Precautions

Before installing the tailgate, check the status of the original tailgate (the door gap is stable)
Check the appearance of the vehicle before installation to take pictures of the scratches and inform the owner
After the product is installed, it is necessary to perform tailgate learning to work properly.
All the pictures in this manual are for reference only. Pictures and objects may differ, but the installation method is the same.
In order to facilitate your installation, please read the instruction manual of the product carefully before installation; care should be taken to protect the surface of your car and prevent scratches during installation.
Please check regularly that all accessories connected with the car are loose to ensure safe use.



1. Black plate will be removed in the first place



2. The original car bottom bracket will be removed, replace our bottom bracket (ball head outwards), with the original screw fixation



3. The original car right bracket will be removed, replaced our lower bracket (ball head outwards), with the original screw fixation



4. Remove the stopper is cut open a vent, conducive to hall wire threading (left and right side steps)



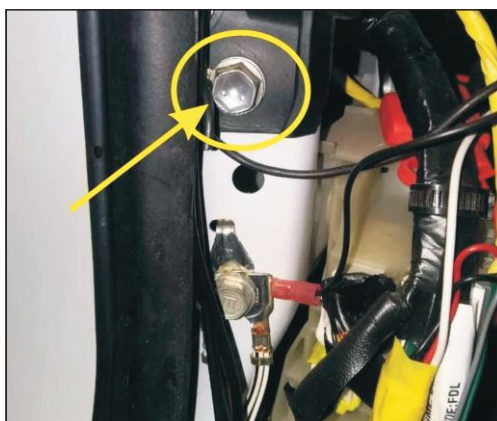
5. Will the silicone "into the hole



6. Hall walk line after line through the hole to end door cover plate



7. Remove the trim at the bottom of the main drive, remove the original car 20 a fuse, plug in our power plug



8. In the main drive side remove the plaque, loosen screw after connecting the ground wire, tighten the screw



9. Main drive to remove the original empty button, the installation before we switch button (choose one)



10. In the main drive belt B column, trim will be removed, and find the Central Line



11. Central Line by gray line (from left to right the second ranked the third hole)



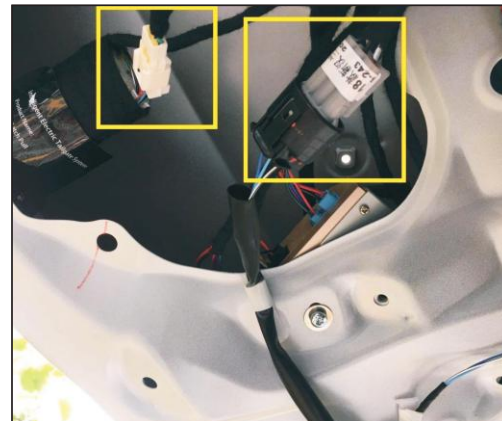
12. And the power cord, switch before lines to central walked along the yellow line



13. And the power cord, switch before the Central Line through the rubber plug walked to the central control box



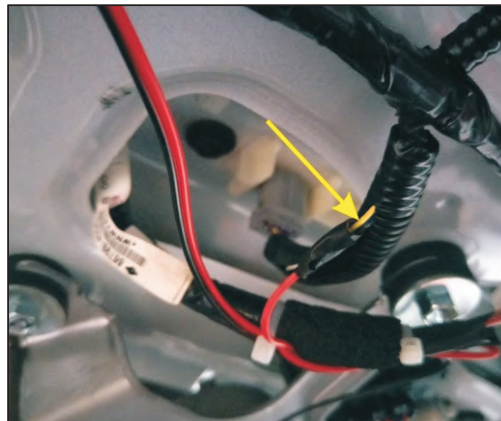
14. Abort the original screw, remove the original car lock, installed on our electric absorption, use the original car screws



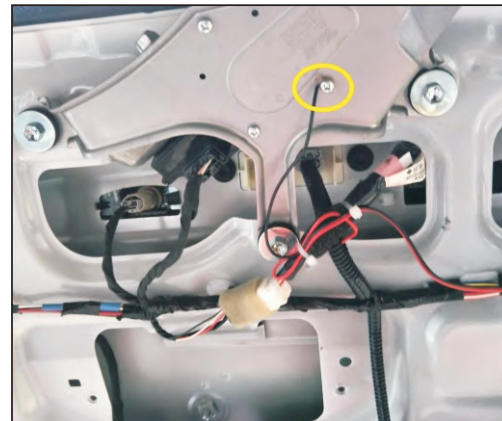
15. At the tail door locks unplug the original car socket, to plug our tee adaptor, the wire and tee white socket for our electric suction on the socket



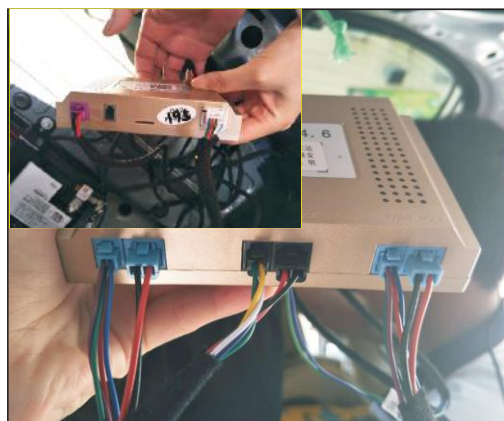
13. Under the stern door pull the seat



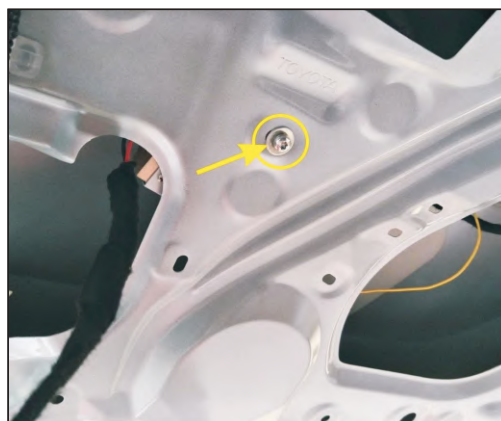
14. The main switch before driving red line after the saddle yellow line



15. Switch before the black line connect the tail door grounding screw



13. The hall line, control line, the power cord a pair we control box



14. Install the control box, here with our 3 m glue on the back of the control box, with a tie



15. Install the tail door switch to the position as shown