

Land Cruiser Electric Suction System Installation Manual

Matters Needing Attention

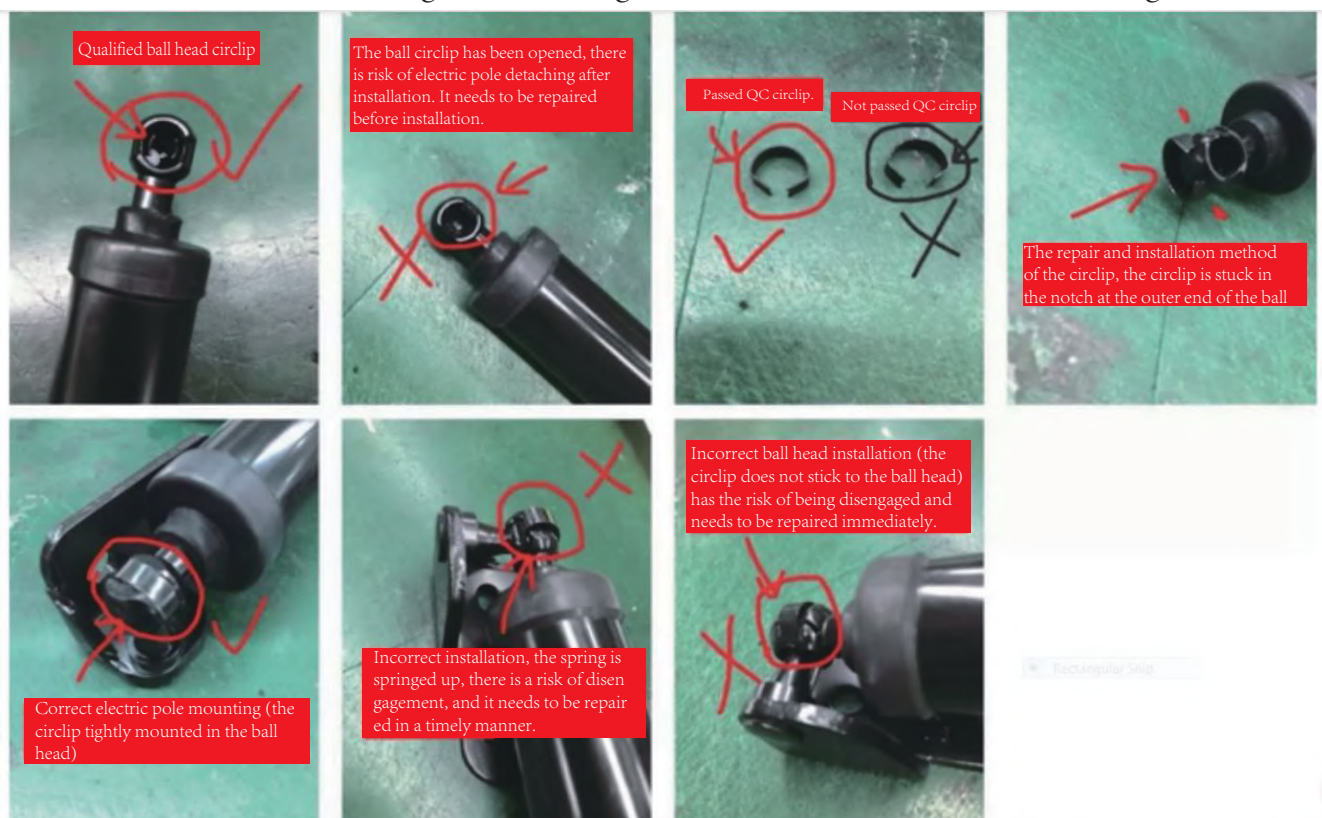
All the pictures in this manual are for reference only. The pictures may differ from the actual ones, but the installation method is the same.

For your convenience, please read the instruction manual of the product carefully before installation. Please pay attention to protect the surface of your car and avoid scratching.

Please check regularly that all accessories connected to the car are tight to ensure safe use.

Common Issues

1. Bracket installation reverse: trunk door does not close properly
2. The bracket screw is not replaced as required: the door does not close properly, will damage electric poles
3. The ECU control box is not plugged in properly, loose: there is no force when opening or closing the door or the anti-pinch force is heavy
4. Pole ball head, the circlip is not installed properly: the poles detach during use (check after installation)
5. The connector is not plugged in properly, it falls off: the function fails.
6. The electric suction lock is off center: the door cannot close, the door gap is large, and the tension is tight, which causes the door to open loudly.
7. Installed in a new car for a long time without restarting the car, resulting in low power: door opening or closing not functioning normally, need to restart the car
8. Adding more than 5 kg of soundproof cotton to the tailgate may affect the opening or closing door force, add power to ECU control box.
9. Long press the tail door button for 3-5 seconds till you hear the "beep" sound - the sound is long, loosen hand and push down the tailgate and will hear a "beep beep" sound, completing the programming (the tailgate will not function normally in un-programmed state)
10. When the ball head is wrong, the non-aligned ball head can be rotated 360 degrees.





1. Remove the original support struts and brackets, install our specially designed bracket and electric pole, the electric pole wire runs from the top (left and right steps are the same)



2. Remove the trim panels, the Hall wire is routed to the tailgate trim board



3. Connect power and ground under the driver compartment



4. Connect power and ground under the driver compartment



5. At the driver compartment finds the corresponding switch position according to the picture, and replaces the spare part with a dedicated switch.



6. Pull out this socket at the tailgate and insert our pulse wire.



7. Remove the trim board from the B-pillar of the driver compartment seat belt



8. Central control wire connect with red and white color wire



9. Remove the lock hook of the original car and add a specially design flat washer under the original car lock hook.



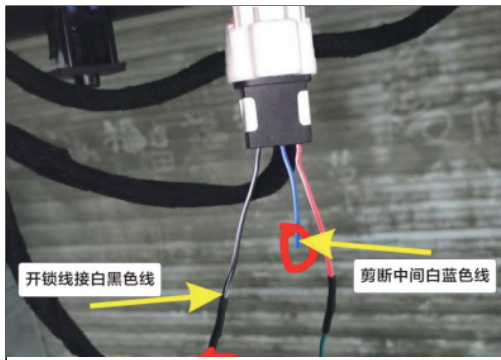
10. Install specially designed electric suction lock and fix it with original screw



11. Install specially designed electric suction lock and fix it with original screw



12. Connecting three-way connection socket At the tailgate trim panel, find this socket and pull it out, then plug in our three-way adapter



13. Open lock wire connect to white black color wire.
Cut the middle of white blue color wire



14. Installation of ECU Control Box Insert the plugs into the corresponding socket according to the color and shape (check whether the socket is tightened or not)



15. Installation of Tailgate Switch
Installation position of tailgate button

After the installation is completed, you must set up the tailgate programming settings. Make sure that the doors are closed in place.

(Raise the tailgate to the desired height, press the tailgate switch button, 3-5 seconds will appear a "beep" sound, loosen hand, then press the tailgate button to close, the tailgate is close in place, and there is a "beep" sound, that is, the tailgate programming is completed)

Disclaimer

The related problems and losses caused by improper installation and use are not covered by our company's warranty. Please read this manual carefully before use. Please store carefully after reading, so that you can check it later. The picture is for reference only. The product is subject to the actual object.

Button control mode

- 1: Long press on tailgate button for three seconds to open or close door on the original car remote control
 - 2: Press once on the open/close door button on the front switch.
-

Height Setting

Raise the tailgate to the desired height, press the tailgate switch button, 3-5 seconds will appear a "beep" sound, loosen hand, then press the tailgate button to close, the tailgate is closed, and there is a "beep" sound, that is, the tailgate programming is completed

Solution to Electric Tail Door Failure

Fault Phenomenon	Troubleshooting
The original car remote control did not work	Whether the yellow center line connected properly
Does not work after installation is complete	Check if the positive power supply is connected to 12V-16V Check if the power cord fuse is plugged in. Check if the ground wire is connected
Tailgate do not close properly	Whether the left and right brackets of the poles are reversed Whether the control box cables plugged in properly Whether the bracket is fixed or replaced with our special screw There are two vinyls on the left and right sides of the original rear door. If it is loose, it needs to be tighten.
The original car remote cannot close the door	Whether there is any programming after installation. The first time you install on the car, you need to program by using the tailgate button once. Programming steps; open the door and press and hold the door button for three seconds. When you hear a click, release the hand and press the button again. The tail door will automatically close and programming is complete.
The tailgate does not go up halfway	Whether the left and right brackets of the poles are reversed Whether the control box cables is plugged in properly Whether the bracket is fixed or replaced with our special screw